



**AGENDA
GREER CITY COUNCIL**

March 8, 2022

MEETING LOCATION: Greer City Hall, 301 East Poinsett Street, Greer SC 29651

5:30 PM

COUNCIL SPECIAL MEETING

Call to Order

Mayor Rick Danner

Public Hearing

1. South Carolina Revenue and Fiscal Affairs 2020 Redistricting Benchmark Report

Adjournment

Anyone who requires an auxiliary aid or service for effective communication or a modification of policies or procedures to participate in a program, service, activity or public meeting of the City of Greer should contact Ruthie Helms, ADA Coordinator at (864) 848-5397 as soon as possible, but no later than 48 hours prior to the scheduled event.

Category Number:
Item Number: 1.



AGENDA
GREER CITY COUNCIL
3/8/2022

South Carolina Revenue and Fiscal Affairs 2020 Redistricting Benchmark Report

ATTACHMENTS:

Description	Upload Date	Type
▣ South Carolina Revenue and Fiscal Affairs 2020 Benchmark Report	2/10/2022	Backup Material



2020 REDISTRICTING BENCHMARK REPORT

CITY OF GREER

REPORT PREPARED BY:

South Carolina Revenue and Fiscal Affairs
Rembert Dennis Building, Room 419
1000 Assembly Street
Columbia, South Carolina 29201
(803)-734-3793
www.rfa.sc.gov

November 16, 2021

REDISTRICTING REPORT 2020 PRESENTED TO: CITY OF GREER

The South Carolina Revenue and Fiscal Affairs Office (RFA) has prepared the following analysis and accompanying maps regarding the redistricting for the City of Greer Council.

RFA strives to release data that is complete, accurate, and useful. However, we ask that you notify us, either by email (redistricting@rfa.sc.gov) or phone (803-734-3793), of any discrepancies.

ITEMS TO NOTE PRIOR TO REVIEWING THIS REPORT:

- The 2020 Census presents new challenges regarding redistricting as the data below the state level will be affected by the U.S. Census Bureau's efforts with respect to differential privacy. The Bureau has stated that the total population in each state will be "as enumerated," but that all other levels of geography could have some variance from the raw data. This variance is referred to by the Census Bureau as "injecting noise" into the data and is an attempt to improve privacy. The bureau has indicated that no "noise" will be injected into the state total population, but it is likely that noise will be injected for every other level of geography. More noise is injected as the geography levels get smaller. In other words, population counts at the county, city, or block level may not be "as enumerated".
- Race is defined following the guidance provided in OMB Bulletin No. 00-02 which allocates population counts of a "minority race and white" category to the minority race. In Tables 2 and 3, NH DOJ Black is the sum of Non-Hispanic Black and Non-Hispanic Black and White as recommended by the Department of Justice (DOJ).

CONSIDERATIONS FOR PRELIMINARY PLAN:

In developing a preliminary plan, RFA recommends following constitutional and statutory provisions:

- The requirement of “one person, one vote” under the Equal Protection Clause of the 14th Amendment and accepted variances.
- The Voting Rights Act, primarily Section 2, which protects the interest of the racial minority population.
- Other applicable court decisions and federal and state law.

Further, RFA recommends the following set of traditional redistricting principles be considered:

- Districts or wards will be drawn contiguously, so that all parts of the district or ward are connected to each other.
- Districts or wards will be drawn to minimize the division of voting precincts.
- Districts or wards will be geographically compact to the extent practicable, such that nearby areas of population are not bypassed for a more distant population.
- Districts or wards will be drawn, when feasible, with respect to existing districts and communities of interests, which will require input from Council and the citizens.
- Districts or wards will be drawn to comply with other applicable court decisions and federal and state laws.

2020 CENSUS BENCHMARK REPORT

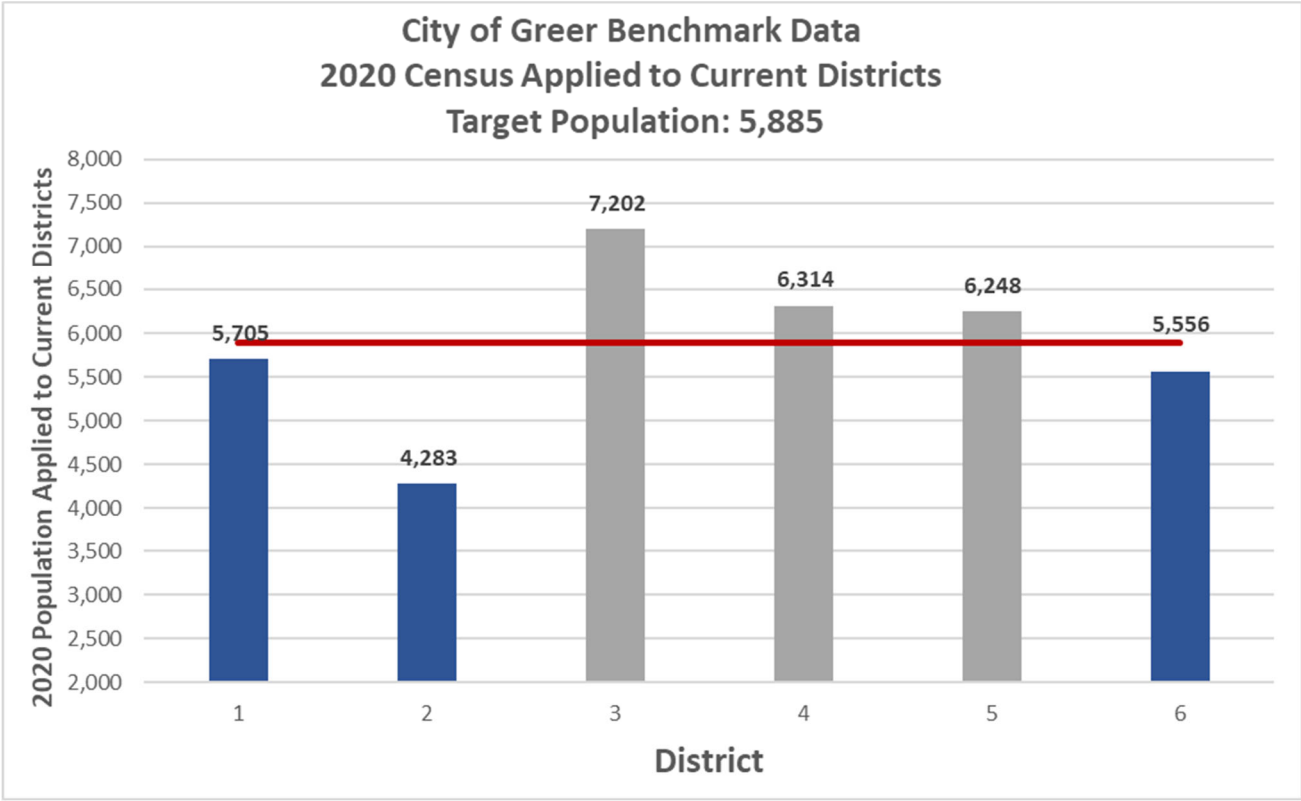
The population of the City of Greer has increased 38.4% from 25,515 to 35,308. As a result, the ideal district changed from 4,253 to 5,885. The Benchmark Report noted a deviation range of 49.6% (the sum of the highest deviation, 22.39%, and the absolute value of the lowest deviation | -27.22% |) which is above the maximum range of 10%. RFA recommends a deviation range of 5%.

The following table and chart show which districts are (under-) or over-populated indicating potential adjustments needed to be within the allowable deviation range.

TABLE 1: 2020 CENSUS COUNTS APPLIED TO CURRENT DISTRICTS

Table 1: 2020 Census Counts Applied to Current Districts				
District	2020 Census	Goal	Over/(Under)	% Deviation
1	5,705	5,885	(180)	-3.05%
2	4,283	5,885	(1,602)	-27.22%
3	7,202	5,885	1,317	22.39%
4	6,314	5,885	429	7.30%
5	6,248	5,885	363	6.17%
6	5,556	5,885	(329)	-5.59%
Lowest	-27.22%			
Highest	22.39%			
Range	49.60%			

CHART 1:



MAP 1:

Current County
Council District Lines and
Addresses of Incumbents

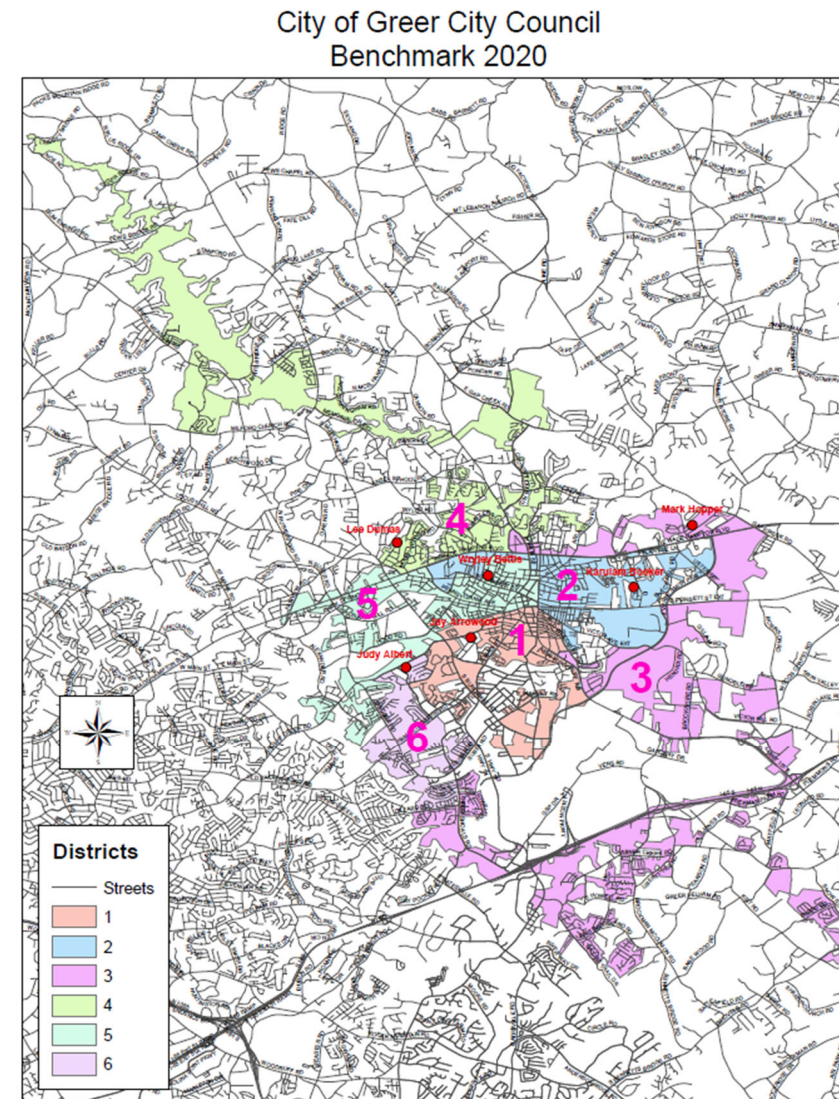


TABLE 2: TOTAL POPULATION BY RACE *RACE DEFINED USING DOJ DEFINITIONS. NOT HISPANIC OR LATINO IS ABBREVIATED AS NH.

District	Total	Hispanic	% Hispanic	NH White	% NH White	NH DOJ Black*	% NH DOJ Black	NH Other Race	% NH Other Race
1	5,705	1,523	26.70%	2,991	52.43%	910	15.95%	281	4.93%
2	4,283	934	21.81%	1,148	26.80%	2,054	47.96%	147	3.43%
3	7,202	878	12.19%	4,669	64.83%	752	10.44%	903	12.54%
4	6,314	657	10.41%	4,541	71.92%	860	13.62%	256	4.05%
5	6,248	917	14.68%	3,822	61.17%	906	14.50%	603	9.65%
6	5,556	721	12.98%	3,456	62.20%	526	9.47%	853	15.35%
Total	35,308	5,630	15.95%	20,627	58.42%	6,008	17.02%	3,043	8.62%

TABLE 3: VOTING AGE POPULATION BY RACE *RACE DEFINED USING DOJ DEFINITIONS. NOT HISPANIC OR LATINO IS ABBREVIATED AS NH.

District	Total VAP	Hispanic VAP	% Hispanic VAP	NH White VAP	% NH White VAP	NH DOJ Black* VAP	% NH DOJ Black VAP	NH Other Race VAP	% NH Other Race VAP
1	4,281	992	23.17%	2,448	57.18%	635	14.83%	206	4.81%
2	3,108	599	19.27%	931	29.95%	1,469	47.27%	109	3.51%
3	5,199	594	11.43%	3,477	66.88%	529	10.18%	599	11.52%
4	4,934	468	9.49%	3,653	74.04%	622	12.61%	191	3.87%
5	4,574	608	13.29%	2,946	64.41%	630	13.77%	390	8.53%
6	4,065	510	12.55%	2,668	65.63%	356	8.76%	531	13.06%
Total	26,161	3,771	14.41%	16,123	61.63%	4,241	16.21%	2,026	7.74%

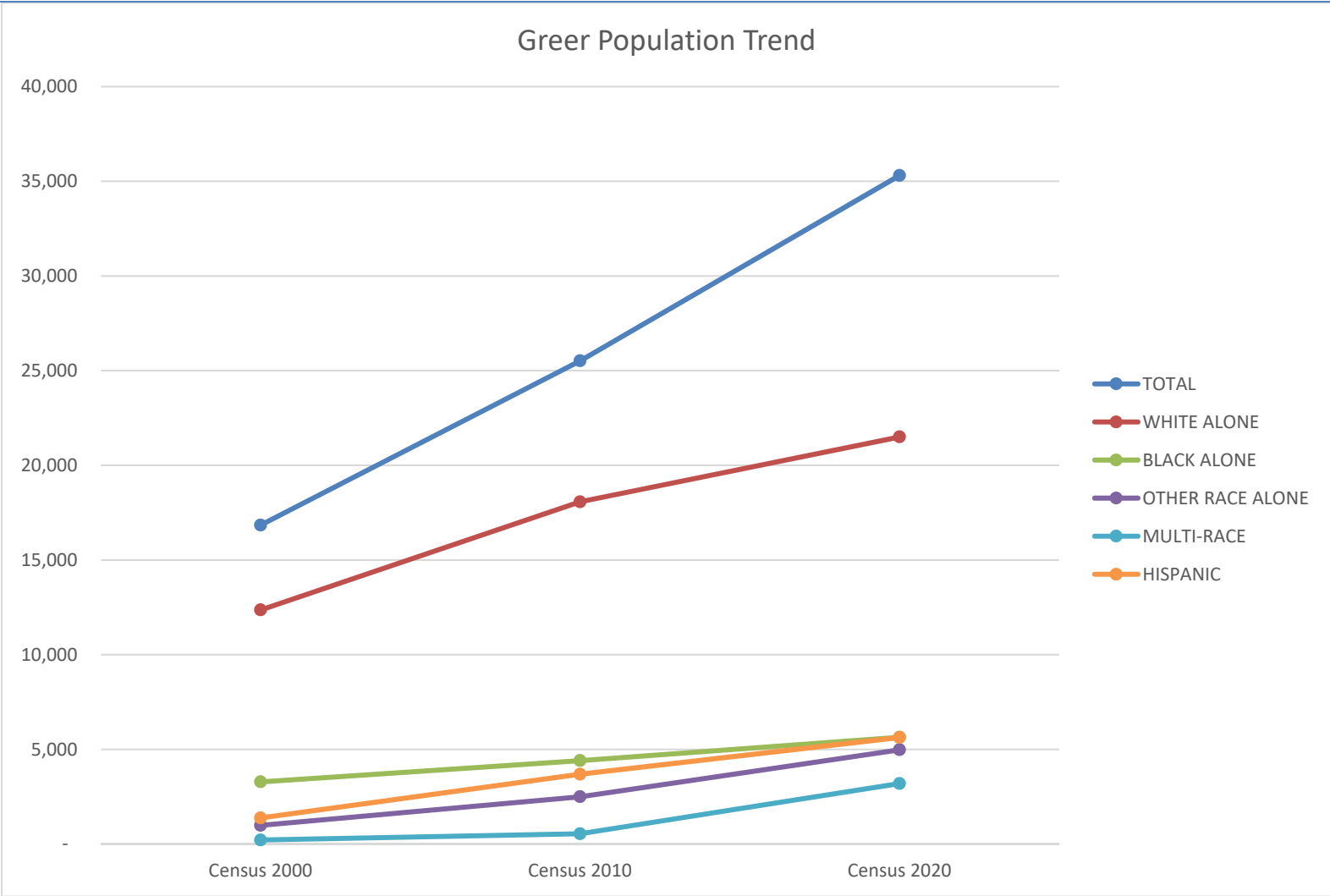
RFA ANALYSIS RESULTS:

Due to data limitations, RFA has not yet completed the voting analysis. If the data becomes available, we will provide the results to Council.

RFA RECOMMENDATIONS:

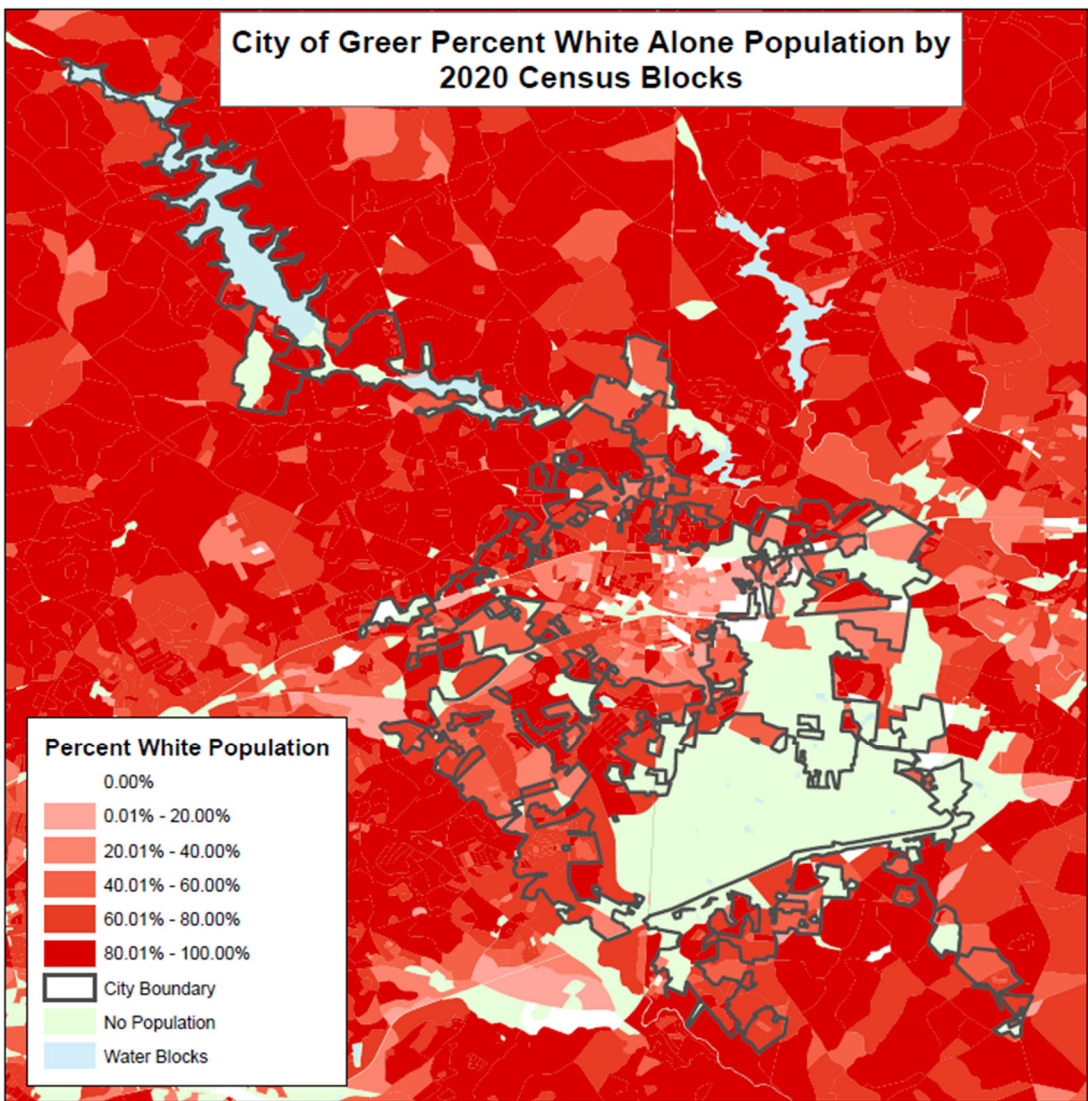
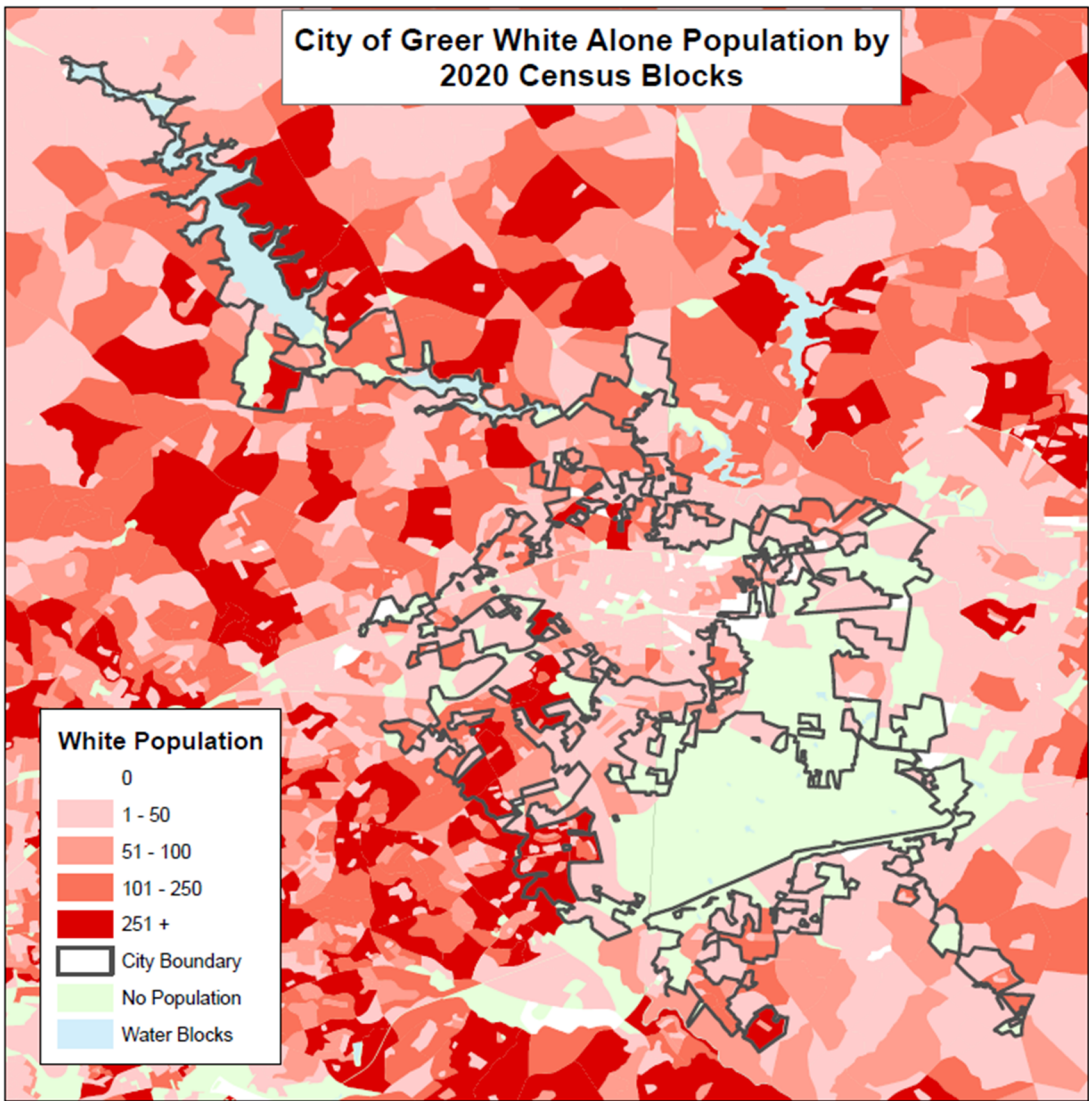
- RFA requests Council conduct a public meeting to discuss this report and solicit feedback from the public.
- RFA recommends Council adopt, through either a resolution or acceptance of this plan, the following traditional redistricting principles:
 - Districts or wards will be drawn contiguously, so that all parts of the district or ward are connected to each other.
 - Districts or wards will be drawn to minimize the division of voting precincts.
 - Districts or wards will be geographically compact to the extent practicable, such that nearby areas of population are not bypassed for a more distant population.
 - Districts or wards will be drawn to comply with other applicable court decisions and federal and state laws.
 - Districts or wards will be drawn, when feasible, with respect to existing districts and communities of interests, which will require input from Council and the citizens.
- RFA recommends Council give careful consideration to minority districts for compliance with Section 2 criteria of the Voting Rights Act.
- Because of the potential effects of differential privacy, RFA recommends Council adopt a deviation range of 5%.

CHART A-1 POPULATION TREND BY SINGLE RACE, 2000 - 2020



APPENDIX B - MAPS BY SINGLE RACE CATEGORIES (CORRESPONDS WITH TABLE A-2)

MAPS BY SINGLE RACE CATEGORY - WHITE



MAPS BY SINGLE RACE CATEGORY - BLACK

